



Parent Information Meeting 2023 Year 6

Welcome!

Meet The Team

6 Poplar

Ms Fielder

6 Rowan

Mr Faircloth

Teaching Assistant

Mrs Parmar

Phase Leader

Ms Siddique

Meet The Team

Other adults working in the classrooms:

- **Mrs. A Parmar (Learning Mentor)**
- **Mrs. Solanki (Inclusion)**
- **Coach Zack (P.E)**

Maths

Roughly, this will be our learning sequence for the year.

Autumn term	<div>Number</div> <div>Place value</div> <div>VIEW</div>	<div>Number</div> <div>Addition, subtraction, multiplication & division</div> <div>VIEW</div>	<div>Number</div> <div>Fractions</div> <div>VIEW</div>	Geometry Position & direction VIEW				
	<div>Number</div> <div>Decimals</div> <div>VIEW</div>	<div>Number</div> <div>Percentages</div> <div>VIEW</div>	<div>Number</div> <div>Algebra</div> <div>VIEW</div>		<div>Measurement Converting units</div> <div>VIEW</div>	<div>Measurement</div> <div>Perimeter, area & volume</div> <div>VIEW</div>	<div>Number</div> <div>Ratio</div> <div>VIEW</div>	Consolidation
	<div>Statistics</div> <div>VIEW</div>	<div>Geometry</div> <div>Properties of shape</div> <div>VIEW</div>	Consolidation & themed projects				VIEW	

English

Writing

Immersion in the text

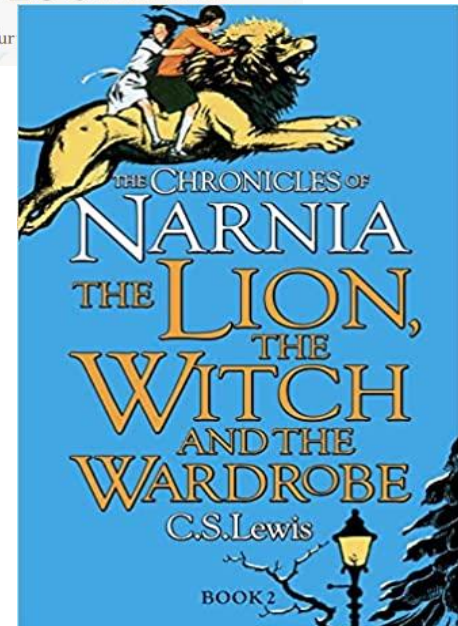
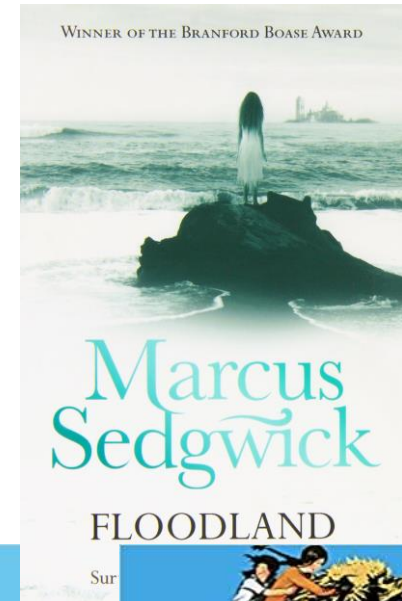
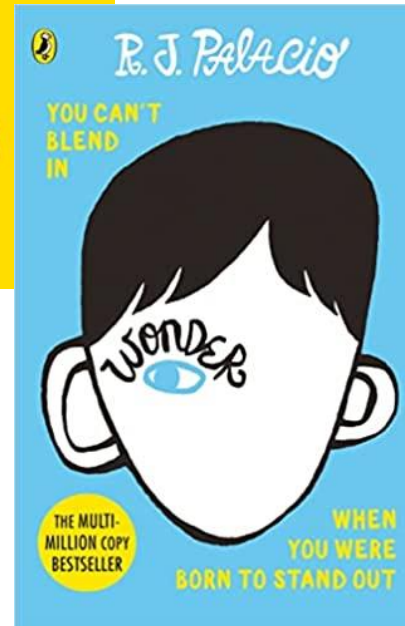
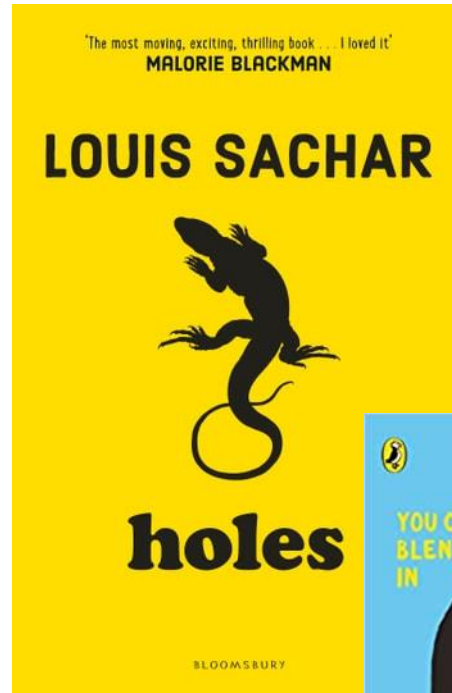
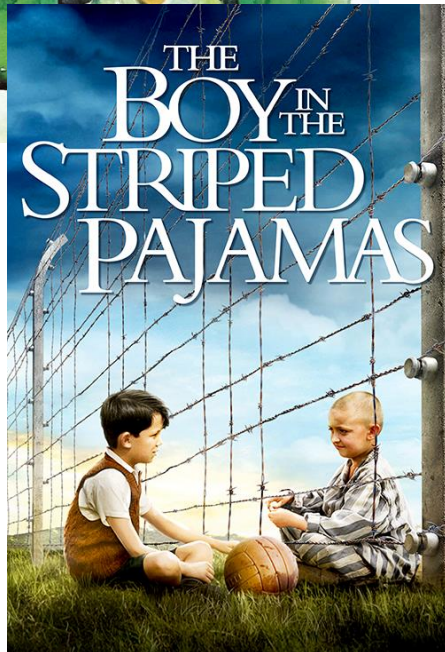
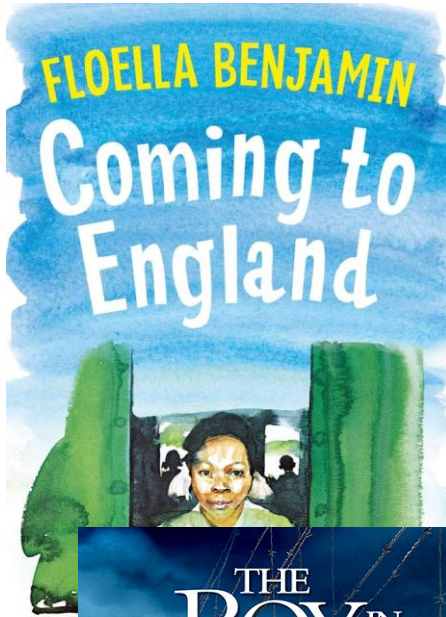
Model

Independent

Reading

- Daily Reading - Home School Readers
- LRC
- Destination Reader

Books we will be using in English this year



Knowledge Organiser

Knowledge Organiser Year 6 – Autumn 1 2023 (Geography)

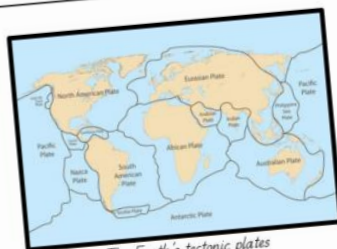


Volcanoes

This term we will explore volcanoes. We will be learning about what happens when a volcano erupts and what the resulting impact is upon its surrounding area. We will also discuss why people might choose to live near an active volcano.

Volcanoes

- Put simply, a volcano is an opening in the Earth's surface.
- They are usually found in mountains on land and even sometime below the sea!
- Gas, hot magma and ash to escape from beneath the Earth's crust to cause eruptions.
- "volcano" comes from the Roman name "Vulcan". He was the Roman god of fire!
- Volcanoes are often found at meeting points of "tectonic plates". These plates are pieces of the Earth's surface that fit together just like a jigsaw puzzle.



The Earth's tectonic plates

Tectonic Plates

- We think land doesn't move on Earth as, however it turns out that it is always moving. We don't notice the earth moving because it only moves between one to six inches per year. It takes millions of years for the land to move a lot.
- Most of the Earth is covered by seven major plates and eight smaller ones. The seven major plates include the African, Antarctic, Eurasian, North American, South American, India-Australian, and the Pacific plates. Some of the minor plates include the Arabian, Caribbean, Nazca, and Scotia plates.

TASK

... on volcanoes and tectonic plates, we are going to ... where eruptions took place ... and

Key Vocabulary

Plate tectonics: The theory that explains how the Earth's outer shell is divided into several large and small plates that move and interact with each other.

Pyroclastic flow: A fast-moving mixture of hot gas, ash, and volcanic debris that flows down the slopes of a volcano during an explosive eruption.

Vent: An opening or passage through which volcanic materials, such as lava and gases, are released to the Earth's surface during an eruption.

Volcanic ash cloud: A large plume of fine ash particles and gases that rises high into the atmosphere during a volcanic eruption, often causing air travel disruptions and affecting weather patterns.

Key Vocabulary

Volcano: A mountain or hill with a crater, rock, gases, and ash can erupt from deep crust.

Magma: Molten rock beneath the Earth's surface.

Lava: Hot, liquid rock that flows from a volcano when it reaches the surface through an eruption and cools to form solid rock.

Ash: Tiny, powdery particles of rock ejected into the air during a volcanic eruption.

Crater: A bowl-shaped depression in a volcano where lava, gases, and ash erupts.

Montserrat

- Montserrat is an island nation located in the Leeward Islands in the Caribbean Sea. The original inhabitants were the Arawak and the Carib peoples. The first European to arrive was Christopher Columbus during his second voyage to the New World in 1493. Columbus named the island after the Virgin Mary and the Monastery of Montserrat.
- The British gained control of the island when a group of Irish settled the island. African slaves were imported to work the land and the island cultivated sugar, rum, and cotton. Slavery was abolished in 1834. Today Montserrat is a British overseas territory.
- In 1995 the island was devastated by the eruption of the Soufriere Hills volcano. Two-thirds of the population fled the island during the eruption. Since then more volcanic activity has occurred.



The eruption at Montserrat

Yosemite

Size of an eruption at Yellowstone Park

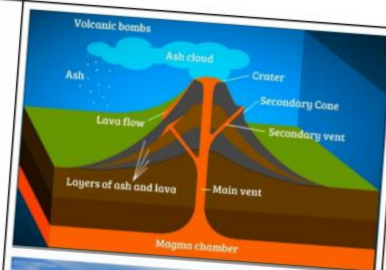
Scientists estimate the ash and pyroclastic rocks erupted by the volcano was 1000 times greater than the Mount Saint Helens eruption in 1980. Pyroclastic flows, carried enough pyroclastic material to cover 3,000 square miles.

Lava Creek Tuff

The rock from the flows created the Lava Creek Tuff. There were approximately 240 cubic miles of pyroclastic material erupted during the event. This is enough material to cover the entire lower 48 states with 5-inches of ash and pyroclastic rock.



The famous Yosemite Falls



The Reading Curriculum

Includes:

- **Shared reading** (Whole class, groups)
- **Destination Reader**
- **Regular independent reading** (and paired reading, buddy reading with children in the school)
- **Hearing books read aloud on a regular basis**
- **Selecting their own choice of texts.**
- **Home/school reading** (at the child's level of reading)

Research shows that regular reading:

- improves brain connectivity
- increases your vocabulary and comprehension

Home Learning

- Home learning is given out on **Thursday** and should be returned to school completed by the following **Tuesday**.
- **Home Learning will be available on Google Classroom.** [There will be a printed copy if your child cannot access Google Classroom.]
- **Your child will be asked to :**
 - read everyday [sign the reading record]
 - have a spelling task
 - a Maths task (on Atom Learning)
 - an English task (on Atom Learning)
 - learn times tables
- **Home learning must be completed. If it is not completed, your child may need to stay in at lunchtime to complete it.**
- Remember to read the knowledge organiser with your child every term. Also support your child with the half termly home learning project.
- Let us know what you think of the knowledge organisers and projects !

Educational Visits this year

- We are hoping to arrange educational visits every term.
- All educational visits are based on the children's learning. We hope to visit museums, attend workshops and exhibitions to enhance their learning.

We ARE Preston Manor

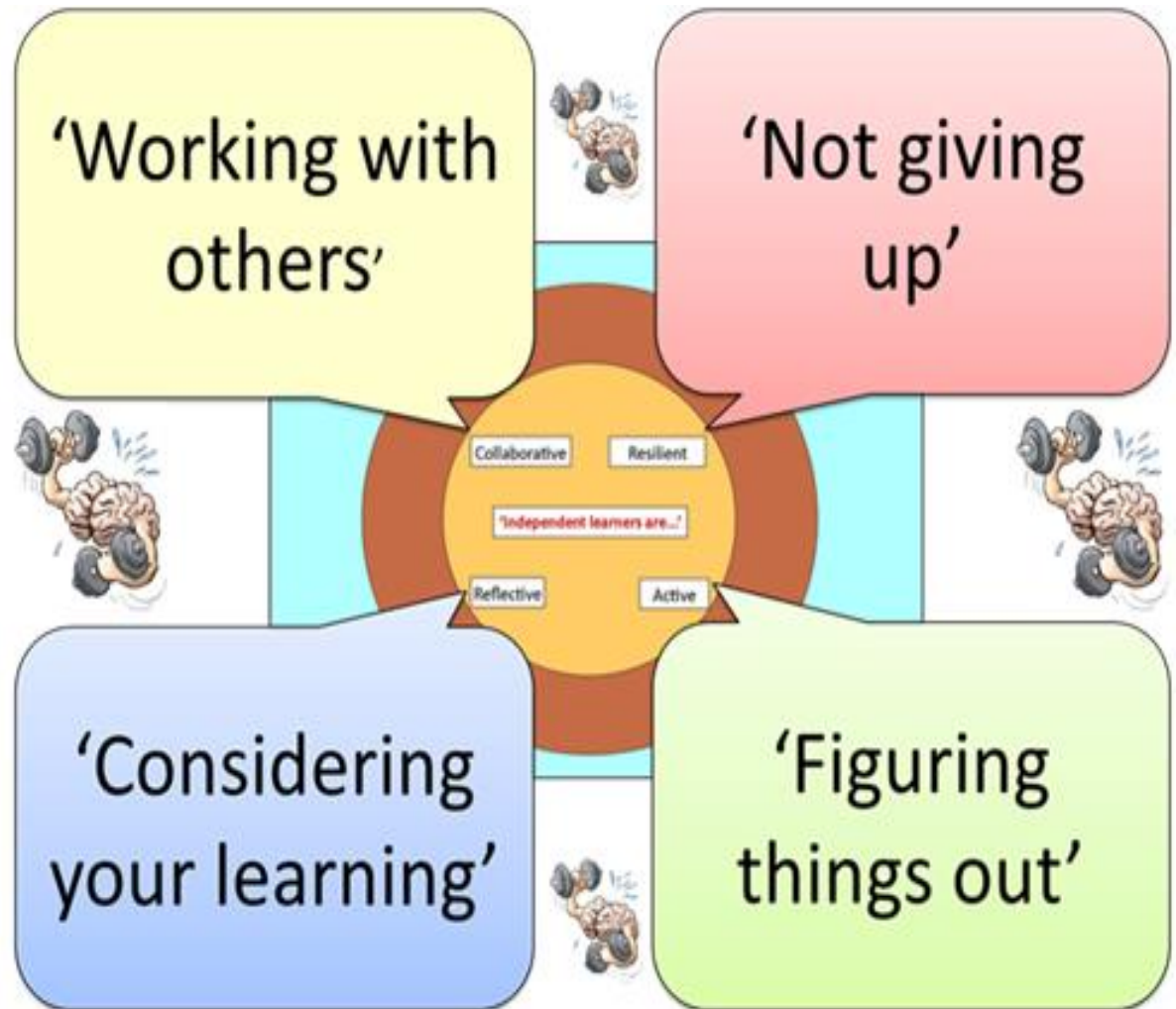
A = Ambition

R = Responsibility

E = Excellence

...works alongside the Learning Identity...

- Each learning approach has motto to help students understand it



Behaviour Expectations



Our Behaviour System



To receive a GOLD Award at the end of the week the pupil needs to have reached Gold **once** in the week.



To receive a SILVER Award at the end of the week the pupil needs to have reached Silver **2 times** in the week.



To receive a BRONZE Award at the end of the week the pupil needs to have reached Bronze **3 times** in the week.



All children start the day on green.



Verbal warning



1. Reflection Sheet in class (time out at reflection table).
CT discussion with child about behaviour.
2. If behaviour persists, second reflection sheet (time out in parallel class).



Child sent to phase leader- fills out reflection sheet and letter sent home to parents. (At phase leaders discretion, children sent to them for red behaviour may be sent on to the Head, to be recorded in the red book or possible lunchtime detention.

Reminders

- Make sure children arrive at school on time every morning. Please continue to observe social distancing with your child.

The Year 6 start time is : 08:30

The Year 6 finish time is : 15:20

- Please ensure that children bring their reading record to school **every day**. This should be signed and dated by an adult. **Children should be reading for at least 20 minutes every evening.**
- Home Learning is set on Thursday and must be completed, or returned to school by Tuesday.
- Send your child with a reusable water bottle.
- If you would like to discuss anything with the teacher, please contact the office. The teacher will phone you.
- P.E is on Tuesday for 6 Rowan, Wednesday for 6 Poplar and on Thursday, 6 Poplar and 6 Rowan.
- The correct school uniform must be worn every day – no trainers
- For safety and hygiene, please make sure that your child brings the correct P.E. kit as follows:

Our P.E Uniform

Blue t-shirt with school logo or plain



Navy blue shorts,
leggings or jogging
bottoms



Black plimsolls

Uniform Stockists

Rumbles School Uniform Shop

598 High Road, Wembley, HA0 2AF , 0208 902 1393

Mayfair Sports

463 Kingsbury Road, London, NW9 9DY, 02082048117

My Clothing (online)

<https://myclothing.com/ueslink/19444.school>

Healthy Packed Lunches and Playtime Snacks

A child at school should have about a third of their daily nutrient requirements at lunchtime. This means they need food that is going to provide them with enough energy, protein, fibre, vitamins and minerals.

**A healthy snack : a piece of fresh fruit, dried fruit, a cereal bar or yogurt pouch
NOT biscuits, sweets or crisps**

A good packed lunch contains:

- A starchy food, such as bread, rolls, pitta bread, naan bread, potatoes, rice, noodles.
- These foods are good for children to fill up on.
- A good source of protein, iron and zinc such as meat, fish, beans or eggs.
- A good source of calcium such as milk, cheese, yoghurt or fromage frais.
- And one portion of fruit and one portion of vegetable or salad to provide all the other vitamins and this could include; a piece of fruit or dried fruit. A portion of vegetables could be fresh vegetables such as a carrot stick, salad or a vegetable soup or vegetable dish.

No single food contains all the essential nutrients the body needs to be healthy and function efficiently so it is important that the content of the packed lunch is **varied**.

More information can be found on

:<http://www.nhs.uk/Livewell/Goodfood/Pages/the-eatwell-guide>.

The following foods should **not be included** in their school packed lunch: **crisps, cakes and biscuits or juice** as these foods do not include the important nutrients children need to grow and develop, to be healthy and active. **If your child brings these foods to school, they will not be allowed to eat them.**

Please do not send any food containing nuts, as some children have allergies. This includes Nutella spread sandwiches

Attendance

- Children should aim for attendance of at least 98%.
- All attendance is regularly monitored by Mr. Atkinson and Mrs. Parmar. If there are concerns about your child's attendance you will receive a letter and print-out of their attendance, with follow up meetings, if necessary.
- Children falling below 90% attendance (= 1 day's absence per fortnight) must be referred to the Local Authority Educational Welfare Officer as 'Persistent Absentees'.
- Requests for term time leave will be authorised only in the most exceptional circumstances.
- All unauthorised leave must be referred to the LA, and may result in a **Educational Penalty Notice**. The fine for unauthorised attendance is £60 per parent per child, so for one child the fine would be £120 but for 2 children would be £240.

Things to look out for this year.

- SATs
- Swimming
- Year 6 Production

Ways to help your child:

- Ensure your child reads every night and writes a thoughtful comment in the reading record.
- Encourage your child to read a variety of different print e.g fiction and non-fiction texts, print in the environment, comics, kindles/stories on ipads
- Talk to your child about what they have learnt and enjoyed during the day.
- Make sure that home learning is completed by your child, if necessary with your help, and please go through it when completed.

Volunteers

- If you would like to volunteer in school, email Ms Siddique. She will let you know what to do next. [q.siddique@preston-manor.com]
- You could help to improve the reading skills of children, or support them in small groups.
- If you are training to be a TA, you can do your placement here.

Thank you for listening.

Information sheets will be sent home with your children at the end of the day.

Questions?

If you have a question, please write it in your child's reading record. Your teacher will reply in the record.