



### Who are we?

STAR has been designed to complement the work of existing support teams in Brent.

Our aim is to support families, children and young people who are under the care of Brent Paediatrics or Children's Mental Health Services (CAMHS) and will be undergoing a Neurodevelopmental Assessment (Autism Spectrum Condition and / or ADHD) or Social Communication Assessment.

STAR is currently a service for children and young people up to the age of 16, or 19, if they attend a mainstream school Sixth Form.

### How do I access support?

- ★ Once your child has been seen by a health professional, they will speak to you about a referral to STAR.
- ★ You will receive a confirmation email and welcome pack.
- ★ You will also receive a 'Come & Get to Know STAR' invitation, to attend a virtual group session.
- ★ During this session, STAR will introduce the service and welcome any questions, you may have.

### What will STAR offer?

#### **Support for families**

- ★ A meet and greet group session, where you meet STAR and other parents/ carers.
- ★ Drop-in support sessions at Family Wellbeing Centres.
- ★ Phone and email support.
- ★ A three part training course.
- ★ An email information sharing group.
- ★ Signposting to other support services.
- ★ A termly training session with a chosen topic (For example—sleep).

#### **Support for settings**

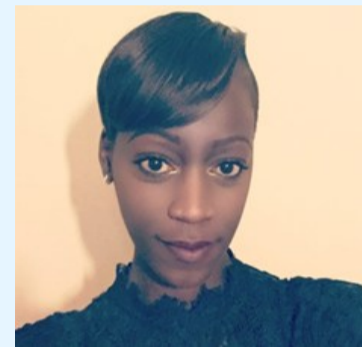
- ★ STAR lead for every setting.
- ★ Phone and email contact with settings.
- ★ STAR attend school meetings: Annual Review for children with an EHC plan, Team Around the Family (TAF) or Team Around the Child (TAC).  
**(where necessary)**
- ★ School visits for children who are CIN/CP/LAC. **(where necessary)**
- ★ Support with the implementation of the Graduated Approach Framework (GAF).
- ★ Universal Guidance and Recommendations handouts and advice.
- ★ Coffee mornings for parent / carers.



## STAR Outreach Officers

I have over a decade of experience working within Special Educational Needs and Disabilities (SEND), supporting children and their families to understand and respond to their needs. My work is driven by a deep commitment to making a positive impact. I find it incredibly rewarding to witness the progress and positive change that can result from tailored support. I am particularly passionate about neurodiversity. I take great pride in raising awareness, promoting greater acceptance and inclusion within both educational settings and the wider community.

**Claire Nanungi**  
SEND Communication & Interaction Service Outreach Officer



I have extensive experience supporting children, young people and their families. I specialise in Social, Emotional, Mental Health (SEMH) needs and Special Educational Needs and Disabilities (SEND). I am deeply passionate about empowering parents of vulnerable children and young people. I am an advocate for ensuring, they have equal opportunities to thrive and achieve their fullest potential as they transition into adulthood. Helping others comes naturally to me. I am often described as calm, approachable and a trusted source of advice and guidance by families and colleagues.

**Asha Leckraz**  
SEND Communication & Interaction Service Outreach Officer

