

Personal, Social and Emotional Development

- To support children develop an understanding of others' feelings and perspectives.
- Encourage and guide children to independently resolve conflicts with their friends.
- Becomes better at handling emotions and accepting situations where they don't get what they want.
- Can talk about their skills, what they do well, and what they are improving on, describing themselves in a positive yet realistic way.



Physical Development

- Can take practical steps to minimize risks, demonstrating an understanding of safe use of equipment and tools.
- Moves confidently and skillfully around, under, over, and through climbing and balancing equipment.
- Can skillfully navigate space during racing and chasing games, adjusting speed or direction to avoid obstacles along with other children.
- Uses a pencil and holds it effectively to form recognisable letters, most of which are correctly formed.
- Begins to show increasing control over an object in pushing, patting, throwing, catching or kicking it.



Expressive Arts and Design

- Provide children opportunities to represent both real-life and imaginary ideas, events, people, and objects.
- Children will continue to build a collection of songs and dances.
- Support children in collaborating within a group to create, explore, and perform imaginative ideas or stories.
- Learns to use lines to create enclosed spaces and starts drawing to represent actions and objects inspired by imagination, observation, and experience.



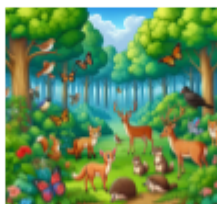
Literacy

- Describes main story settings, events and principal characters in increasing detail.
- Includes mark making within their play (shopping lists, tickets, etc).
- Can discuss stories or non fiction texts that have been read to them at length.
- Engages with books with more confidence, using their phonetic knowledge and the illustrations to read the text.
- Is able to read words with special friends (sh,ch,th,ng,nk,qu)
- Can form lowercase and capital letters correctly.
- Begins to write simple sentences (The cat is fat) with some punctuation.



Reception Curriculum Overview:

Spring 2: Life Around Me



Parents

- Provide phonics support for parents through Google Classroom.
- Invite parents to meetings to help support learning at home.
- Encourage home reading with books sent home weekly.



Mathematics

- Begins to explore and learn that numbers are made up (composed) of smaller numbers (explore compositions of numbers up to 10.)
- Beginning to compare consecutive numbers using the terms "1 more than" and "1 less than".
- Enjoys comparing and exploring size,length,weight and capacity.
- Enjoys composing and decomposing shapes, discovering which shapes fit together to create new ones.



Communication and Language

- Is able to speak using a range of connectives (and, because, so...)
- Understands and is able to answer questions such as who, what, when, where, why and how.
- Can follow a story with no pictures
- Uses new learned vocabulary in their speech
- Is able to understand and respond to more complex sentences that include negative and past tenses.



Understanding the World

- Completes simple games on electronic devices.
- Can create videos, stories and drawing on a screen.
- Can use the internet (with adult supervision) to find information.
- Sees similarities, differences patterns and changes in nature.
- Explores and discusses similarities and differences between environments (land, sea, city, farm, etc) and animals.

